

"1984'den Günümüze»
40. YIL

OHSAD 2023



MEDITEL HEALTHCARE

www.meditel.com.tr
www.medko.com.tr
www.digi-med.com.tr

08/12/2023
www.meditelhealthcare.com



Meditel Healthcare

- Konuşmacı Hakkında;
 - Meditel Healthcare Yönetim Kurulu Üyesi
 - TıpGörDer Yönetim Kurulu Üyesi
 - Eğitim
 - Ph.D.c. Yönetim & Organizasyon (Bahcesehir Üniversitesi)
 - M.Sc. Biyomedikal Mühendisliği (Boğaziçi Üniversitesi)
 - B.Sc. Bilgisayar Mühendisliği (Koç Üniversitesi)
 - Kabataş Erkek Lisesi

Meditel Healthcare

"1984'den Günümüze»
40. YIL



- **1984** Kuruluş
 - Mühendislik Hizmetleri ve Teknik Servis
- **1987** Kobalt ve Dozimetri sistemeleri ile Anahtar Teslim Radyoterapi Projeleri
 - PTW Doz Ölçüm ve Kalite Kontrol Sistemleri
 - Best Theratronics Kan Işınlama Cihazları
- **1994** SHIMADZU Türkiye Distribütörlüğü
 - Radyoloji, Kardiyoloji
- **2006** İlk Hizmet Alım – MEDKO Oncology Network
- **2009** ACCURAY - TomoTherapy
 - **Türkiye'de 32, Yurtdışında 9; Toplam 41 Merkez**
- **2013** IMS GIOTTO Tüm Alan Dijital Mamografi Cihazları
- **2018** VisionRT Surface Guided Radiotherapy (SGRT)



Meditel Healthcare

"1984'den Günümüze»
40. YIL



- 2019 Proton Therapy Temsilcilikleri
- 2020 Yurtdışı Operasyonlar (Bulgaristan, Romanya ve Kazakistan)
 - MEDITEL HEALTHCARE Markası
- 2021 RADON AŞ – Yerli Üretim
- 2022 ACIBADEM - MEDKO İş Birliği (Atakent, Adana, Eskişehir Hastaneleri)
- 4000 Tıbbi Cihaz Parkı (1500 Görüntüleme Cihazı)
- 2022 Distribütörlük, Sağlık Hizmetleri, Üretim&Ar-Ge, Yapay Zeka
- 60 kişiyi Aşan Teknik Servis Kadrosu
- 15 Farklı Lokasyon Radyoterapi ve Radyoloji İşletmesi
- ≈ 300 Toplam Çalışan Sayısı

Meditel Healthcare

"1984'den Günümüze»
40. YIL



ÖNÜMÜZDEKİ 10 YIL İÇİN YENİ HEDEFLER

- 100 Hizmet Alım Merkezi
- Kanser Hastaneleri
- Stratejik İş Birlikleri
- PROTON THERAPY
- Coğrafi Genişleme (Balkanlar, Batı Avrupa, CIS, OrtaDoğu)
- Yerli Üretim'de Büyüme

OHSAD 2023



**İsme Özel Cumhuriyetimizin 100. Yılı Hatıra Kalemleri
MEDITEL Standında**





Teşekkürler...



**MEDITEL
HEALTHCARE**

Since 1984




Meditel Sağlık Grubu Şirketleri

Meditel A.Ş.

Distributorship;
Sales, Installation ve Technical Service

Meditel Healthcare
Bulgaria 

Onco Systems
Romania & Moldova

Meditel Healthcare
Kazakhstan 

Medko Oncology

HSO, PFI & Clinical Operations

Turkey, Romania &
Kazakhstan

Dijimed

IT, R&D and Production

Radon

%100 Production – Radition Therapy

RadAir

AI Auto Contouring

Other Investments

Kuruluş 1984



Meditel Kurucuları - 1985



Compagnie Generale Radiologie
(CGR) – 1981

Therac Linear Hızlandırıcı (Linac) 1970'ler - 1980'ler

AECL Medical



Therac 6 Specifications

Features

- 100 cm T.A.D.
- 126 cm axis height. **Previous**
- 370° gantry and collimator rotation.
- Wedge filter interlocks.
- Wedge filters: 30°, 45°, 60°
- 5 motion treatment table with open section top.
- Beam shaping kit.
- Computer monitoring.
- Servoed and monitored arc therapy.

Photon Beam

- Energy: 6 MV
- Dose rate: 250 rads/min.
- Fields: 2 x 2 cm to 40 x 40 cm, fully square.

Room Requirements

- 16' x 19' x 9', 12 KVA power
- 3 US gal/min water.

OPTIONS

- All new treatment table with 62 cm vertical travel and "Tuning Fork" top.
- Beam shield for full 40 x 40 cm field.
- Optical backpointer.
- Wide field wedge filters.

Service is our Watchword

AECL's Service Centers are on call 24 hours a day, 7 days a week. Strategically located in 7 cities across the United States, in Canada and in Australia, they are your direct link to immediate support service for our complete line of medical products. Backed by fully stocked parts depots, our factory trained technicians are your assurance of trouble-free operation within hours of your call.

Throughout Africa, Australia, Europe, the Far East, the Middle East, Central and South America, our agents are ready to provide an equally high level of sales and service support augmented, should the need arise, by AECL personnel.

In addition, AECL protects your capital investment with a unique, comprehensive service contract, architectural planning assistance and installation supervision. And, our factory based training courses enable the optimum use of our products.

At AECL, service has been our watchword for over three decades. And, it's a watchword built-in to all of our products.

You Can Count on Us

For over three decades, AECL has been a leading manufacturer of radiation equipment for both the nuclear industry and medical fields. The medical division produces linear accelerators and cobalt teletherapy equipment, treatment simulators, positron cameras and medical computer products used in the diagnosis and treatment of cancer. The isotope products division is involved in the manufacture of bulk radioisotopes for world-wide use in radiopharmaceuticals while our industrial division is the world's leading supplier of radiation sterilizing equipment.

For complete information on AECL's Medical products, contact your nearest AECL representative.

Atomic Energy of Canada Limited, Medical Products
P.O. Box 6300, Ottawa, Canada K2A 3W3
Tel: (613) 592-2790
Cable Nemota. Telex: 053-4162

In the United States:
Chicago: (312) 593-3242
Philadelphia: (215) 441-3353
Atlanta: (404) 987-9286
Dallas: (214) 233-9939
Los Angeles: (714) 969-3900

In Australia: North Sydney:
02-439-5488

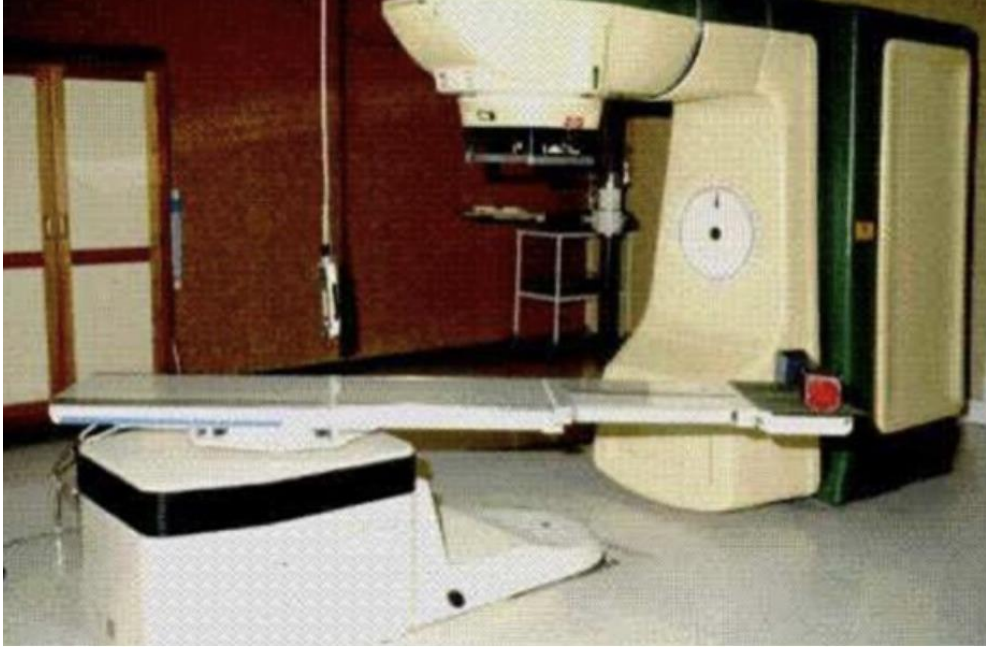
And agents in over 100 countries throughout the world.

Atomic Energy of Canada Limited Medical Products Superior Technology and Experience Sound Economics and Logic



**AECL – Atomic Energy of Canada Limited
Best Theratronics**

1987 – Kobalt Radyoterapi



- EGE Üniversitesi
- Dokuz Eylül Üniversitesi
- Kayseri Erciyes Üniversitesi
- Samsun 19 Mayıs Üniversitesi
- Amerikan Hastanesi
- Hacettepe Üniversitesi
- Osmangazi Üniversitesi
- Van Yüzüncü Yıl Üniversitesi

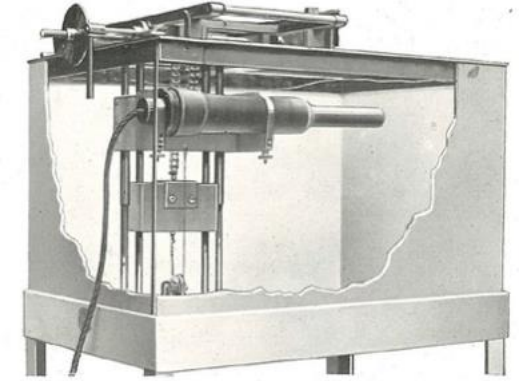
PTW – Dozimetri Sistemleri



Şekil 1: 1919 Fizik Profesörü Wilhelm Hammer'ın Elektrostatik role icadı, bunu sayesinde çok Düşük elektrik yükleri hassas bir şekilde ölçülmeye başlandı.



Şekil 3: Hammer Dosemeter ilk X-Ray terapi Dozimetresi



Şekil 6: İlk PTW Su fantomu ve su geçirmez iyon odası (1929)



1922

1949

1972

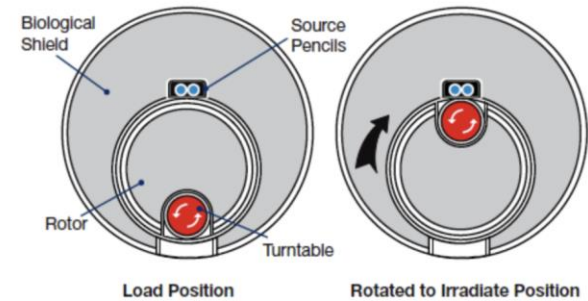
1994

Best Theratronics – Kan Işınlama



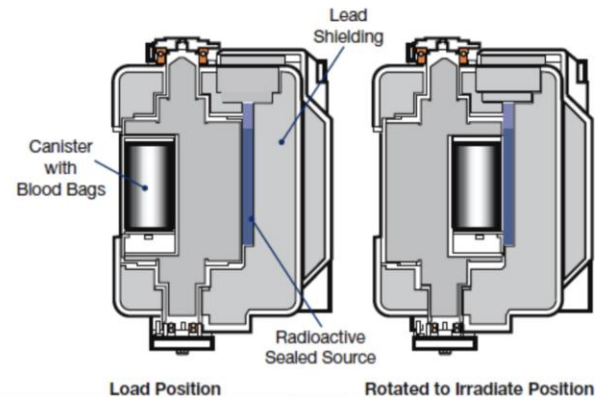
Overhead view of Gammacell® 1000/3000

Fully shielded in either the load or irradiate position.



Side view of Gammacell® 3000 Elan

Overlapping source configuration improves dose uniformity.



Shimadzu Corporation / Medical



Shimadzu History – over 145 years –

1875 Genzo Shimadzu Sr. started the manufacture of physical and chemical instruments for educational purposes in Kyoto, Japan.

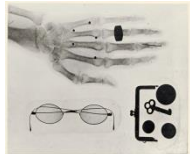


Founder Genzo Shimadzu Sr.

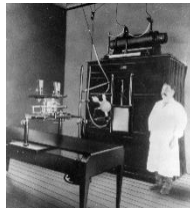


Successor Genzo Shimadzu Jr.

1896 Succeeded in taking radiographs (10 months after Dr. Roentgen's first x-ray)



1897 Started manufacturing storage batteries.



1909 Installed **Japan's first** medical X-ray apparatus.

1956 Made **Japan's first** gas chromatograph.

1961 Developed **world's first** remote-controlled fluoroscopy system.



1968 Established Shimadzu (Europa) GmbH

1977 Shimadzu SCT-100N X-ray CT Scanner for Head

1979 Established Shimadzu (Asia Pacific) Pte Ltd.

2002 **Koichi Tanaka** awarded **Nobel Prize in Chemistry**.

2003 Developed **world's first** angiography system with a direct-conversion dynamic flat X-ray detector.



2005 Released **world's first** mobile DR system : **MobileDaRt**

2013 Developed **world's first** RF : SONIALVISION G4 Tomosynthesis and Slot Radiography

2014 Developed **world's first** cardiovascular system: Trinias with real-time stent visibility enhancement(StentView)

Shimadzu Medical



Cardiac & Angiography



Fluoroscopy & Universal R/F



Mobile C-arm R/F

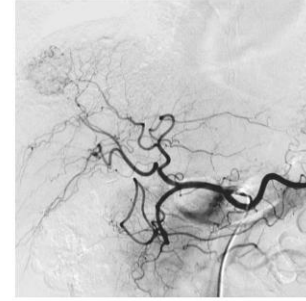


Digital Mobile X-Ray



Digital Radiography(DR)

OHSAD 2023



Slot Radyografi, Tomosentez, Floroskopi, DSA, Radyografi

5 Farklı Modalite!



— April 21, 2023

Topics

Sustainability

Donation of Mobile X-ray System to the Area Affected by the Turkey-Syria Earthquake



At Defne Field Hospital in Hatay

On March 27th, Middle East Headquarters Shimadzu Middle East & Africa (SMEA) and our partner MEDITEL Healthcare, visited Hatay in Turkey for the installation of a digital mobile X-ray.

We, as Shimadzu Group, pray for the swiftest recovery of the affected areas.

Shimadzu - Günümüz

**Tek Hastanede 61 Adet Görüntüleme ve Radyoterapi Cihazı
(55 Adet Shimadzu ve Accuray RADIXACT)**



Başakşehir Çam ve Sakura Şehir Hastanesi

SHIMADZU

Solutions for Science
since 1875



Shimadzu Referanslar

- ❖ Koç Üniversitesi
- ❖ İstanbul Üniversitesi
- ❖ İstanbul Üniversitesi
Cerrahpaşa
- ❖ Ankara Üniversitesi
- ❖ Gazi Üniversitesi
- ❖ Erzurum Atatürk
Üniversitesi
- ❖ Osmangazi Üniversitesi
- ❖ Kayseri Erciyes Üniversitesi
- ❖ Akdeniz Üniversitesi
- ❖ Mersin Üniversitesi
- ❖ Acıbadem Üniversitesi
- ❖ Karadeniz Teknik
Üniversitesi
- ❖ Pamukkale Üniversitesi
- ❖ Gaziantep Üniversitesi

Acıbadem Hastaneleri

- ❖ Bursa
- ❖ Ataşehir
- ❖ Kayseri
- ❖ Adana
- ❖ Bodrum
- ❖ Bakırköy
- ❖ Kent Hastanesi
- ❖ Kozyatağı
- ❖ International
Hospital
- ❖ Bağdat
Caddesi Kliniği
- ❖ BHT Clinic Tema Hastanesi
- ❖ T.C. Sağlık Bakanlığı Eğitim ve
Araştırma Hastaneleri
- ❖ Sağlık Bakanlığı Hastaneleri
 - ❖ Başakşehir Şehir Hastanesi
 - ❖ Etlik Şehir Hastanesi
 - ❖ Bilkent Şehir Hastanesi
 - ❖ Gaziantep Şehir Hastanesi
 - ❖ İzmir Şehir Hastanesi
 - ❖ Kocaeli Şehir Hastanesi
 - ❖ Adana Şehir Hastanesi
 - ❖ Yozgat Şehir Hastanesi

Medko Oncology Network

Türkiye

1. Acıbadem Atakent Hastanesi
2. Pamukkale Üniversitesi
3. Bezmialem Vakıf Üniversitesi
4. Sakarya EAH
5. İzmir Katip Çelebi EAH
6. Dicle Üniversitesi
7. Gaziantep Üniversitesi
8. Eskişehir Acıbadem Hastanesi
9. Adana Acıbadem Hastanesi
10. Sivas Cumhuriyet Üniversitesi
11. Anadolu Sağlık Merkezi (IORT)
12. Kızılay Tıp Merkezi (Radyoloji)

Yurtdışı

1. KAZIOR Oncology Institute Almaty, Kazakistan
2. KAZIOR Oncology Institute Almaty, Kazakistan (Satelite)
3. Multidisiplinary Hospital Karaganda, Kazakistan
4. Iasi TomoTherapy & Radiotherapy Center

Medko Oncology Network



Medko Oncology Network



Medko Oncology Network



KAZIOR, ALMATY



IMS GIOTTO



- Kuruluş 1965, Bolonya, İtalya
- 1983'den beri sadece mamografi üretimi
- 2014'den beri 150'nin üzerinde kurulu Dijital Mamografi Cihaz Parkı



Radixact TomoTherapy



ACCURAY

**Treating Lung Tumors
With Precision Radiation**

On the Radixact® System

TomoTherapy Referanslar

- ❖ Acıbadem Hastaneleri
 - ❖ **İstanbul Altunizade**
 - ❖ **İstanbul Atakent (Üniversite)**
 - ❖ Adana
- ❖ ASM Anadolu Sağlık Merkezi
- ❖ Yurtdışı Referanslar
 - ❖ Iasi University Hospital
 - ❖ Cluj University Hospital
 - ❖ KAZIOR, Almaty
 - ❖ SBALO, National Oncology Hospital, Sofia
 - ❖ University Hospital St. George, Plovdiv Bulgaria
- ❖ T.C. Sağlık Bakanlığı Eğitim ve Araştırma Hastaneleri
 - ❖ İstanbul Başakşehir Şehir Hastanesi
 - ❖ **Ankara Etlik Şehir Hastanesi**
 - ❖ Ankara Bilkent Şehir Hastanesi
 - ❖ İzmir Şehir Hastanesi
 - ❖ Kocaeli Şehir Hastanesi
 - ❖ Kartal Eğitim ve Araştırma Hastanesi
 - ❖ Antalya Eğitim ve Araştırma Hastanesi
 - ❖ İzmir Katip Çelebi Üniversitesi

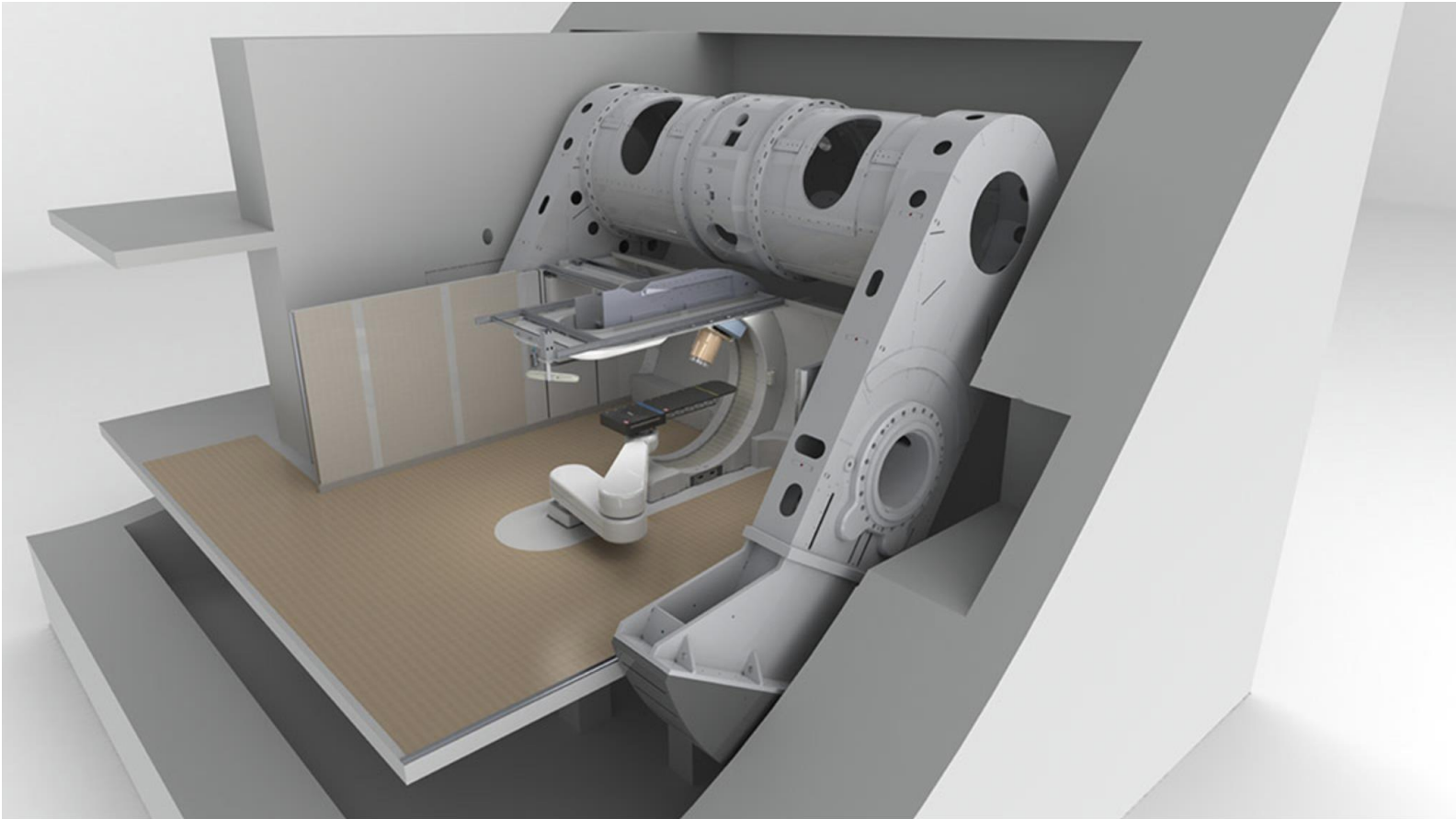
VisionRT – RT'nin Geleceği



Hasta Sabitleme Ürünleri



PROTON THERAPY



PROTON THERAPY

